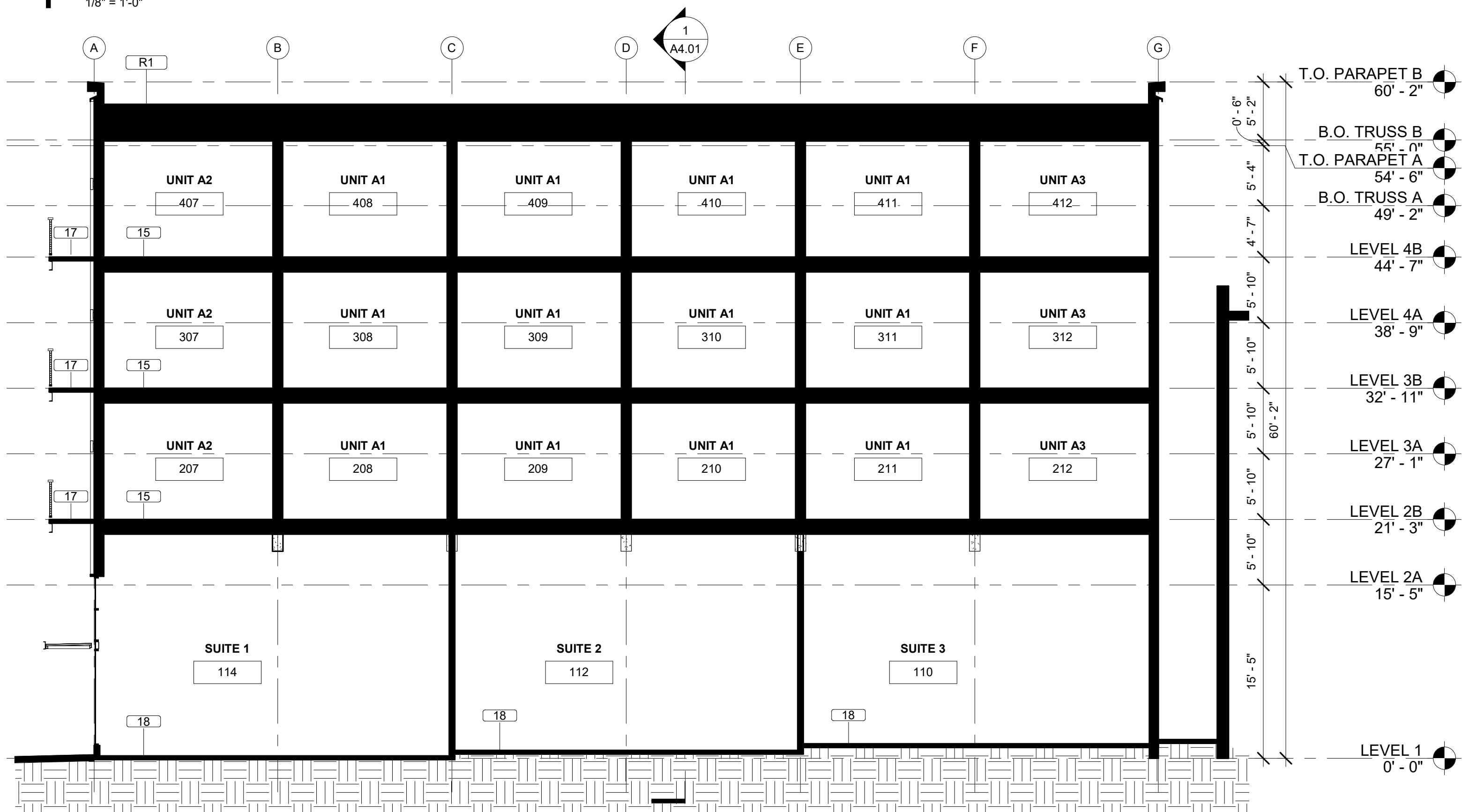
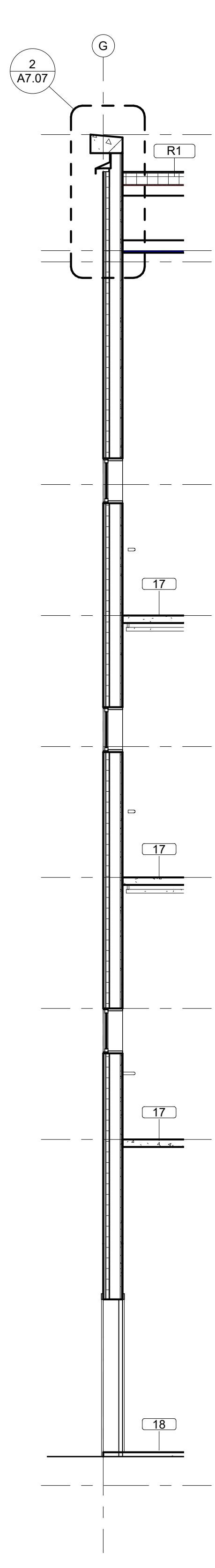
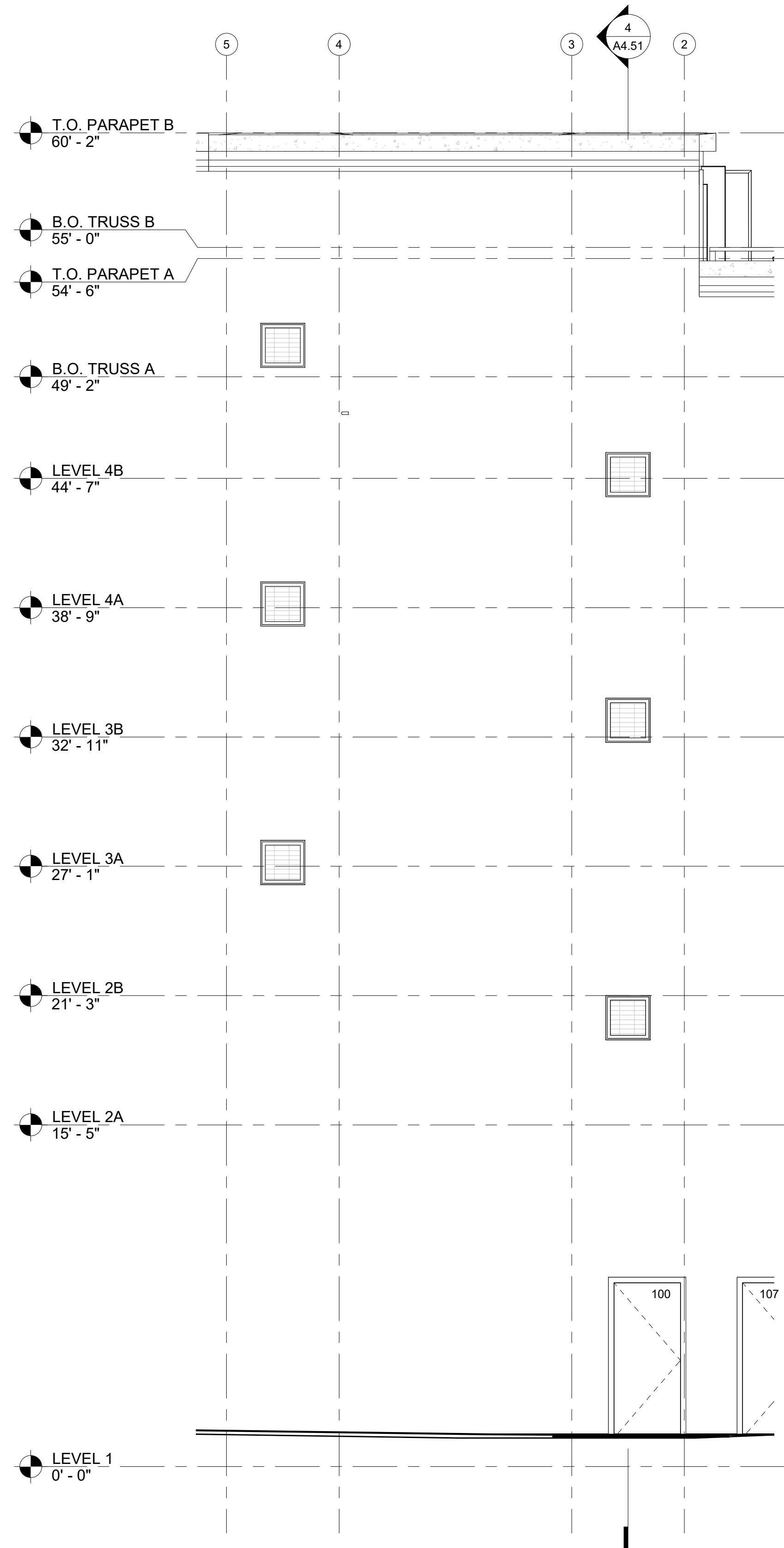
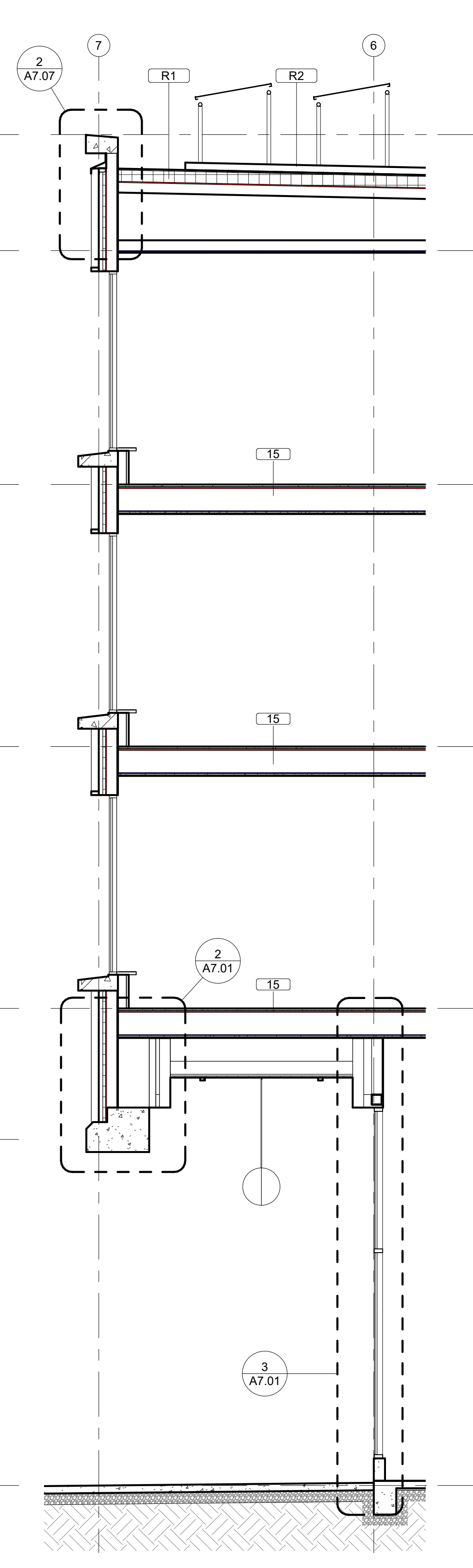
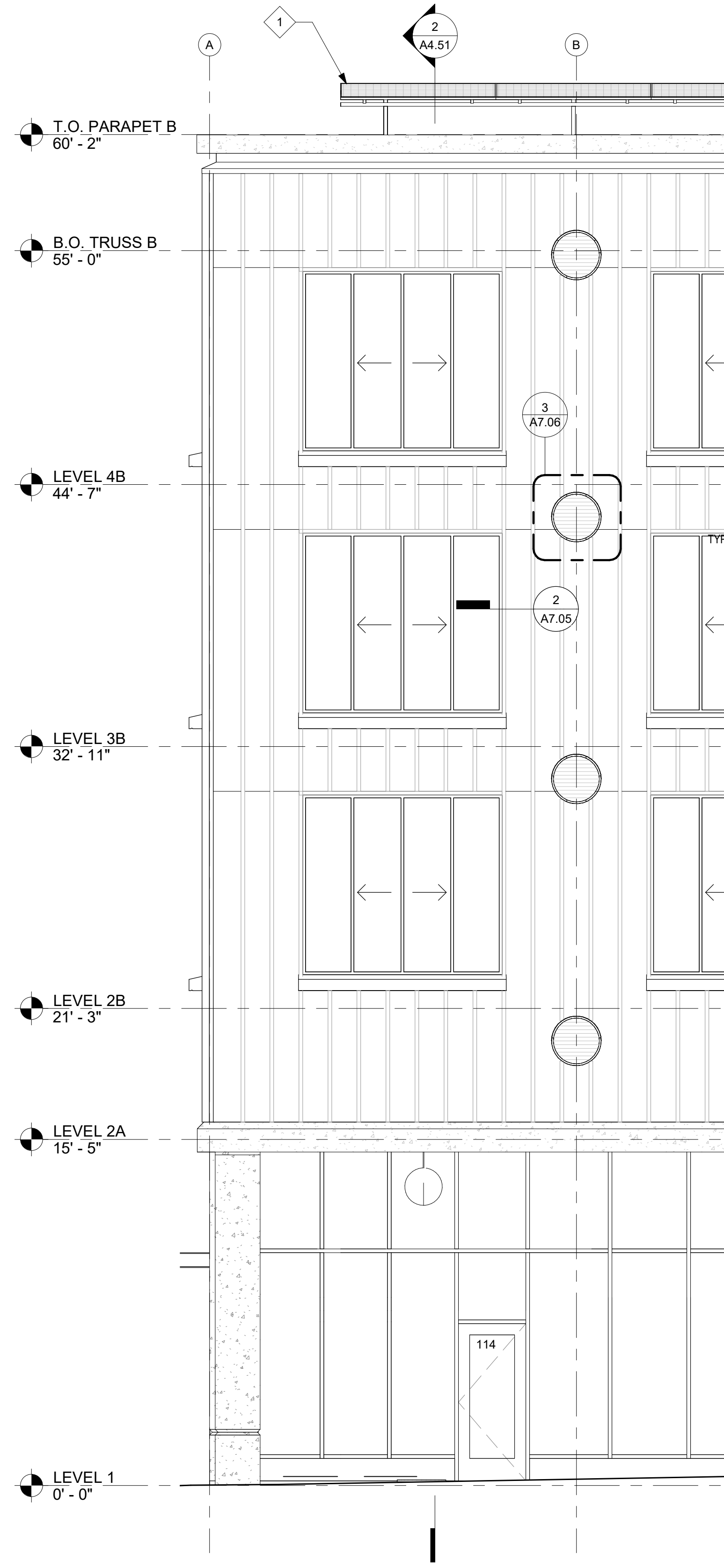


**1 BUILDING SECTION N/S**  
1/8" = 1'-0"



**2 BUILDING SECTION E/W**  
1/8" = 1'-0"

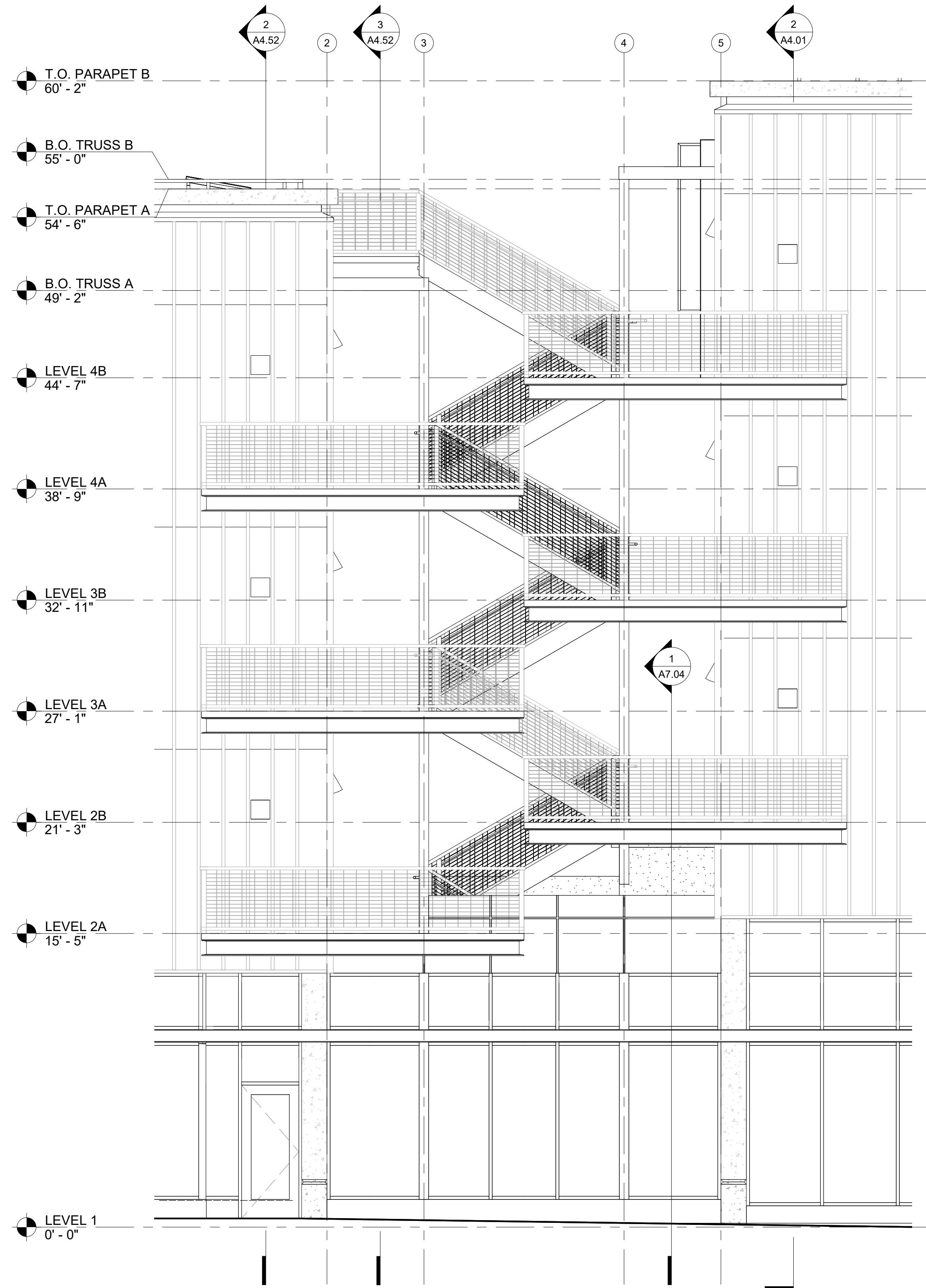


**1** COMPOSITE ELEVATION - BURNSIDE ST ARCADE  
1/4" = 1'-0"

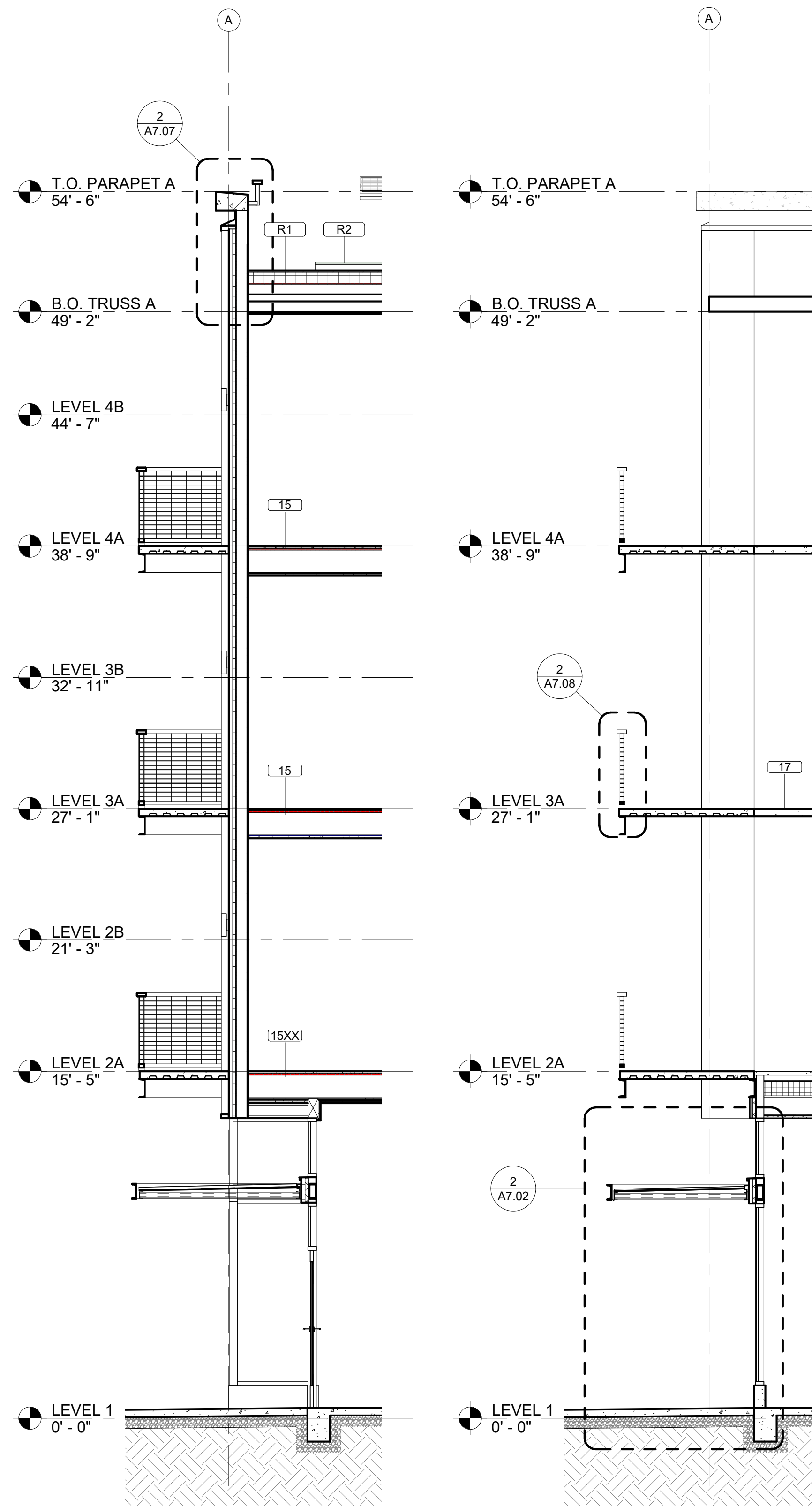
**2** WALL SECTION AT E BURNSIDE ST ARCADE  
1/4" = 1'-0"

**3** COMPOSITE ELEVATION - ALLEYWAY  
1/4" = 1'-0"

**4** WALL SECTION AT ALLEYWAY  
1/4" = 1'-0"

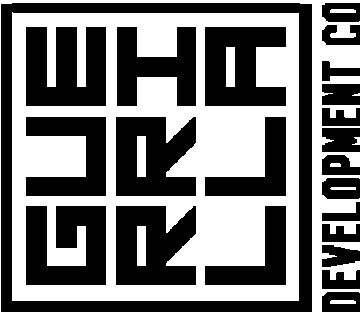
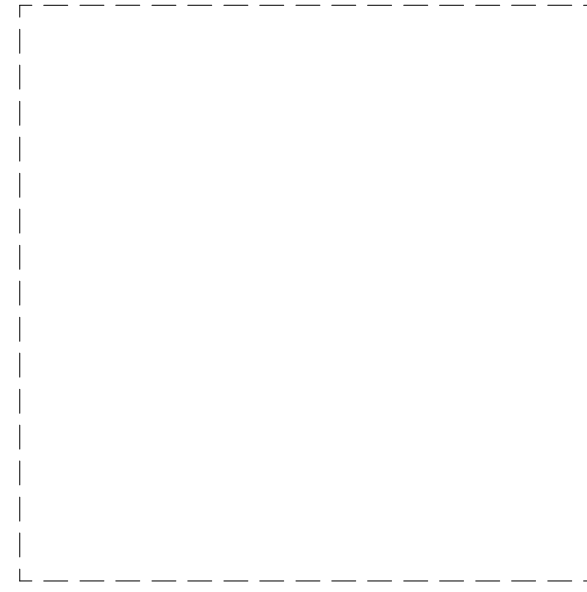


**1** COMPOSITE ELEVATION - EXTERIOR STAIR  
1/4" = 1'-0"



**2** WALL SECTION AT NE 7TH  
1/4" = 1'-0"

**3** WALL SECTION AT NE 7TH  
1/4" = 1'-0"



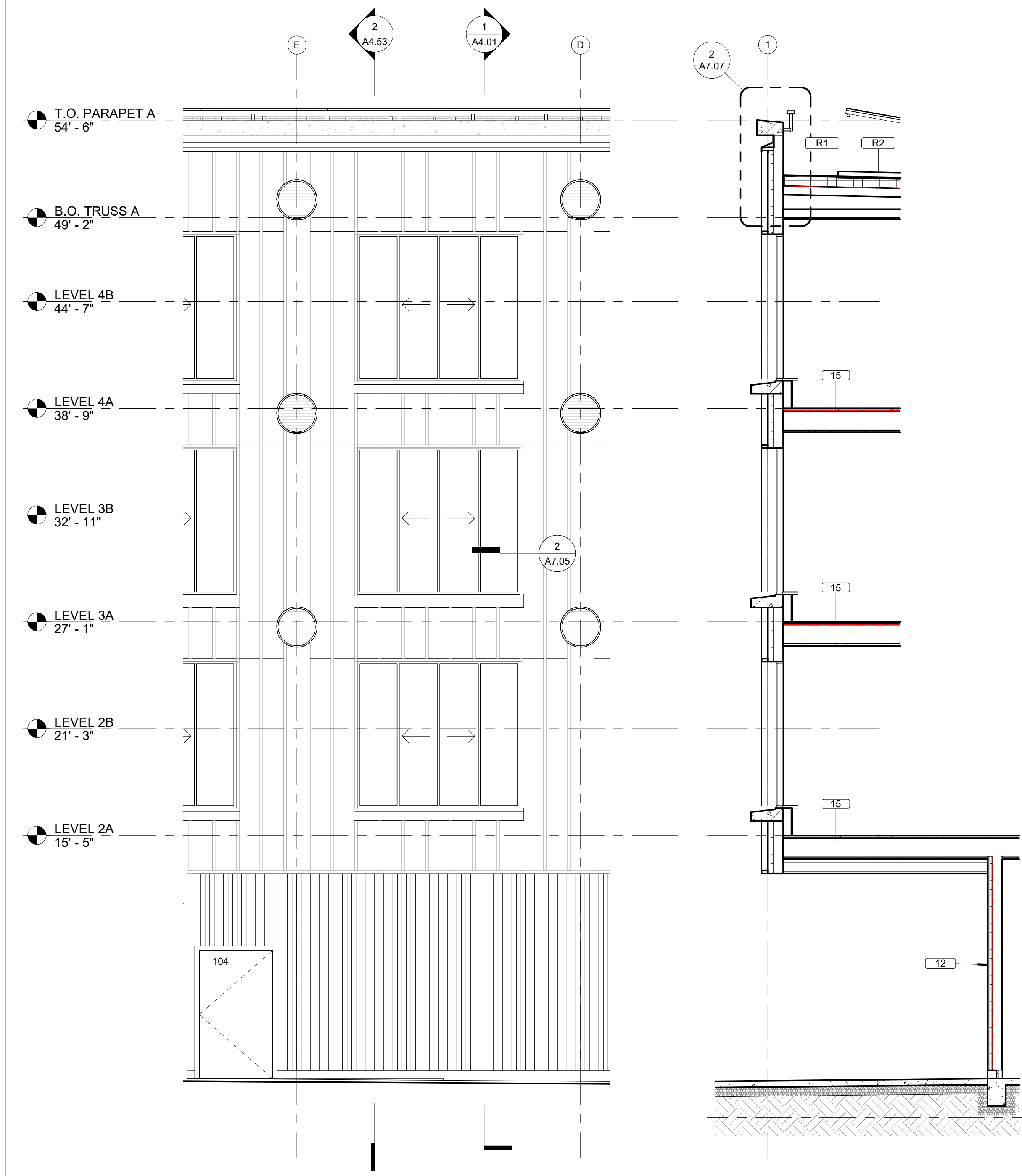
REGISTERED ARCHITECT  
ELIJAH S. ELDER  
PORTLAND, OR 5274  
STATE OF OREGON

© 2021 CONVERGENCE ARCHITECTURE, INC. THIS DRAWING IS THE PROPERTY OF CONVERGENCE ARCHITECTURE, INC. AND IS TO BE USED ONLY FOR WORK EXPRESSLY SPECIFIED IN THE CONTRACT DOCUMENTS.

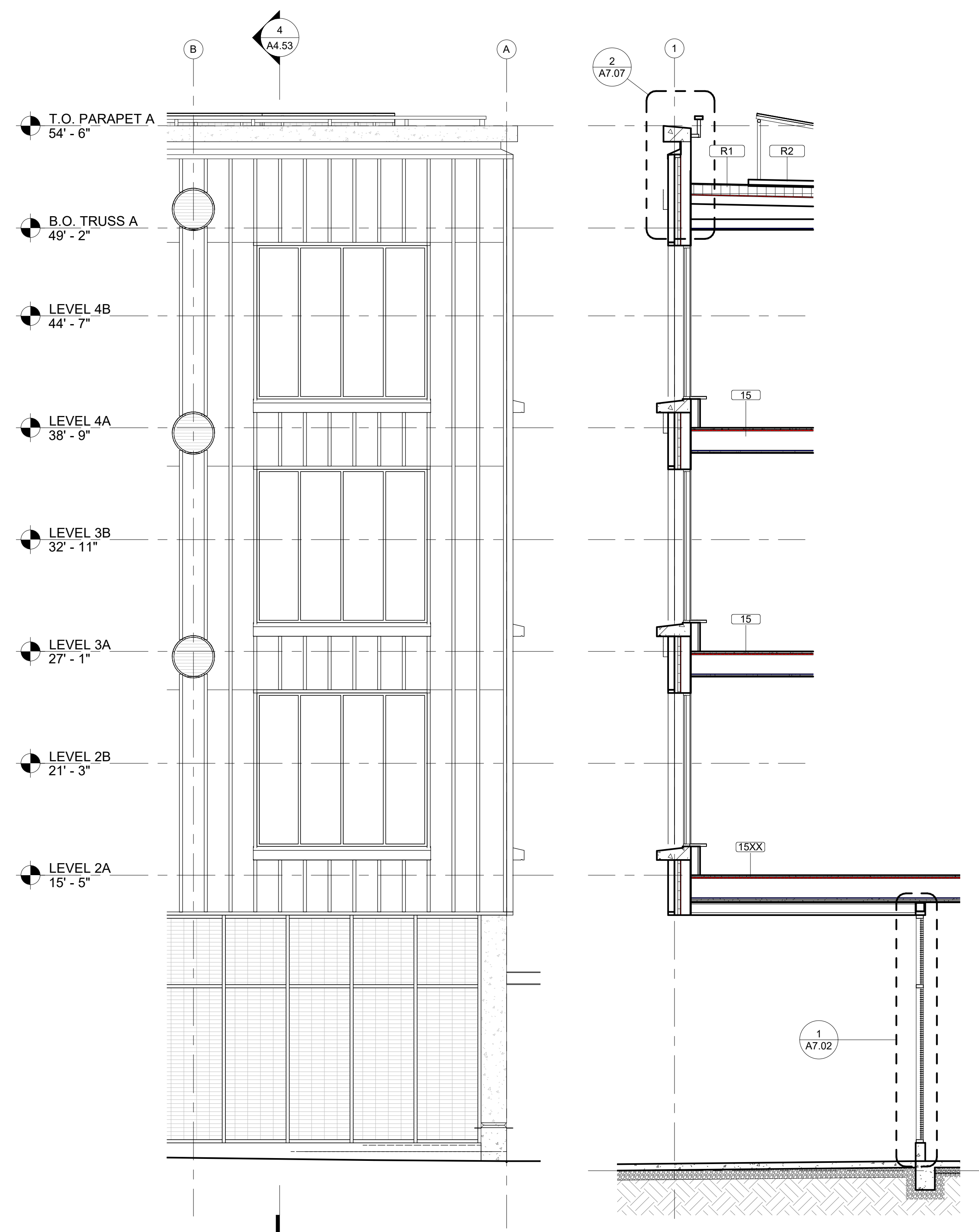
**GREAT SCOTT TRIO**  
701 NE Burnside St.  
Portland, OR 97214  
PERMIT SET

Date: 08/10/20  
Project #: 2088  
Drawn by: Author  
Checked by: Checker  
Revisions:

EXTERIOR COMPOSITE



**1** COMPOSITE ELEVATION - UNIT PATIO  
 1/4" = 1'-0"



**3** COMPOSITE ELEVATION - BIKE PARKING  
 1/4" = 1'-0"

**4** WALL SECTION AT PLAZA  
 1/4" = 1'-0"